



women*scircus

SCRATCH NIGHT

INFORMATION PACK



INFORMATION FOR PERFORMERS

The **Women's Circus Scratch Night** is an informal performance night for the Women's Circus community. It's going to be a fantastic night of socialising and circus!

The performance invitation is **open to all WC members**, as well as circus and physical theatre artists and professionals of a marginalised gender (**read our gender inclusion policy**) who are already **connected to our community**.

Date: Sunday 24th May, 2026

Time: Doors 4:30pm, Performance 5:00pm

Location: The Drill Hall, 395 Barkly St, Footscray

NOTE: The Women's Circus Annual General Meeting will be held in the space 3:45pm - 4:15pm, we are encouraging all members to come to both.

Performing Options:

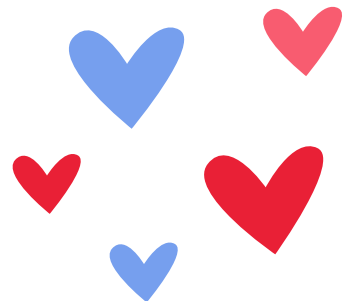
- Have a show coming up or creating a new act and want to test out some material? (2-5 mins)
- Want to make a little something in class to show the community as a whole class, group or solo? (2-5 minutes)

The Scratch Night is a low-fi and low-pressure environment. It's an opportunity to bring circus from the training floor into the creative space, and to share this with our community. **Even if you have never performed before, and just have a snippet of an idea - this is for you!**

Performers also have the opportunity to gather feedback from the audience in a Q+A style at the conclusion of their performance (but don't have to!).

Funds raised through merch, bar and ticket sales go towards our 35 Years Big Show in November!

Rehearsal Times: Scratch Night performers can attend the following Open Training sessions for free: Friday 15 and 22 May from 5:30pm-8:00pm. If your performance is confirmed, you'll receive a promo code to register.





TECHNICAL

The performance space is the [Women's Circus Drill Hall](#).

This is a low-fi set up evening, and the space has:

- Fluorescent overhead work lights only.
- Speakers – any audio tracks to be sent through to **training@womenscircus.org.au** by Monday 18th May.
- 1-2 aerial points and mats are able to be used.

How the night will run:

- Acts will run close together, so keep set up time to a minimum.
- The community room will be available for warm-up and aerial performers have a brief window for setup. There will be an opportunity for a basic tech of your act earlier in the day.
- If you have access requirements, please let us know in the EOI Form and we can work with you to make sure you can participate.

Please complete this FORM if you would like to perform!

EOIs to perform close Monday 11th May. We cannot accept applications after this date.



If you are having trouble completing the form, have any questions or concerns, or want to apply in an alternative way (such as through phone or video call, email or Word document) please email **training@womenscircus.org.au**

